



WORLD'S BEST
ALLOY BULLBARS

East Coast Bullbars (ECB Pty Ltd)

Tel: 07 3897 5700

Fax: 07 3283 1168

ecb@ecb.com.au www.ecb.com.au

29 Snook St
Clontarf QLD 4019
Australia

Po Box 122
Margate QLD 4019
Australia

BMA32SY

REPLACES: 01.07.17
REVISED: 00.00.00

FITTING INSTRUCTIONS

MAZDA CX5 5/2017on BIG TUBE™ FOG LIGHT PROTECTION BAR VEHICLE FRONTAL PROTECTION SYSTEM (VFPS) FOR AIR BAG & ADR COMPLIANT VEHICLES

Check installation hardware before commencing.

1. Lift bonnet
2. Remove centre trim from top of bumper by removing two black push-pull clips. Remove four Phillips head screws and four black push-pull clips from top of bumper.
3. From front of wheel arch (per side) remove three black push-pull clips, and ten phillips head screws, two black push-pull clips from under side of bumper. Pull centre of under body guard down and remove two black push-pull clips from bumper. Remove one 10 mm head bolt from rear wing (per side). Carefully pull out on rear wing to unclip bumper from guard, pull bumper forward to unclip from headlight. **See figure 1.** Disconnect wiring from fog lights, disconnect bumper parking sensors and unplug headlight washer line. Remove bumper.
4. Remove foam pad from bumper support.
5. Remove lower centre ducting by releasing (6) six - 10mm head bolts.
6. On driver side disconnect wiring harness from intercooler and remove from chassis rail.
7. Remove two 14mm head bolts on outside of chassis rail at bumper support join. Using a 18mm drill or die grinder, enlarge outside only of front and rear holes in crash can (per side) to fit chassis spacers. **See figure 2. Blow filings clear and treat all exposed metal with a rust inhibitor.**
8. Install ECB tow hooks (supplied) onto crash can using original 14mm head bolts and M10 washers into chassis rail and tube spacers into bumper support. Two M8 x 120 bolts can be installed to hold chassis spacers in place whilst drilling mount in next step. **See figure 3. Fit Nuts to rear of bolts as locking nuts.**
9. Drill rear chassis mount to 10mm, using ECB tow hook as a guide. **See figure 4. Blow filings clear and treat all exposed metal with a rust inhibitor.** Install M10 x 40 bolts, flat washers, spring washers and nuts (supplied) into drilled holes.
10. Fit ECB steel mounting brackets (supplied) onto front of bumper support using inner ECB steel mounting brackets, M10 x 100 x 1.5 bolts, flat washers and nyloc nuts (supplied) to outer rear ECB steel mounting brackets, M10 x 100 x 1.5 bolts, flat washers and nyloc nuts (supplied) and two M8 x 120mm bolts, flat washers and nyloc nuts (supplied) through ECB tow hooks. Centralise ECB steel mounting brackets to front of vehicle and measure inside of alloy protection bar to set ECB steel mounting bracket in correct position. **Align and tighten bolts. See figure 5.**
11. Mark and cut foam pad to fit around mounts on bumper reinforcement. **See figure 6.** (Secure with zip-tie if required).
12. Mark and cut air deflector to fit around top of mounts. **See figure 7.** Refit to vehicle.
13. Mark and cut lower centre air deflector to fit over steel mounts. **See figure 8.**



14. Remove parking sensors and housing from the bumper and relocate into the rear of the Protection bar channel. **See figure 9.** If vehicle is not fitted with parking sensors, install blanking plus into holes in channel.
15. Remove the fog lights from the bumper and discard.
16. Find template in this instruction. As printers can vary, check scaling to ensure correct. Using sharp scissors, carefully cut out template. Tape bumper with masking tape to avoid damage to bumper. Mark the bumper and check measure to alloy protection bar and steel mounts. Drill corners and cut bumper with a jigsaw or similar to fit over the steel mounts. **See figure 10.**
17. Relocate the sensor wiring and reconnect the intercooler plug.
18. Refit bumper onto vehicle in the reverse steps of step 2 and 3.
19. Fit protection bar onto vehicle using three M12 x 40 x 1.75 bolts, flat washers, spring washers and nuts (per side) (supplied). Align protection bar with vehicle and tighten bolts. **See figures 11 and 12.**
20. Warning. Test parking sensors for correct operation. Should parking sensors not work correctly, adjustment to protection bar will be required.

ENSURE NUMBER PLATE IS CLEARLY VISABLE

Note: When fitting/refitting the licence plate to the vehicle, ensure there is no obstruction to licence plate vision in accordance with local authorities. If required relocate licence plate to an alternate location.

Further VFPS Notes:

- a) Do not attach VFPS to the vehicle using anchorages not intended for this purpose (e.g. engine mounting bolts).
- b) Do not use this product for any vehicle make or model, other than those specified by the VFPS manufacturer.
- c) Do not remove the plaque or label from the VFPS.
- d) Do not modify the structure of the VFPS in any way.
- e) No accessory or fitment should project forward of the VFPS forward profile.
- f) **ENSURE THESE INSTRUCTIONS ARE LEFT WITH VEHICLE OWNER AND/OR OPERATOR.**

IMPORTANT INFORMATION

Periodically check bolts and nuts for correct tightness, especially if travelling on rough roads

FITTING KIT

1 – Pair ECB Front steel mounts	8 – M10 x 1.5 nyloc nuts
1 – Pair ECB tow hooks mounts	4 – M8 x 1.25 x 120 bolts
2 – ECB steel rear inner mounts – IN KIT	8 – M8 flat washers
2 – ECB steel rear outer mounts – IN KIT	4 – M8 nyloc nuts
4 – 10 NB x 3 spacer tubes 94mm long	2 – M6 x 20 bolts
2 – 25.4mm plastic plugs (PT No. IC INSERT 25.4)	2 – M6 spring washers
6 – M12 x 40 x 1.75 bolts	2 – M6 nuts
12 – M12 Flat washers	1 – ECB Indicator / Park / DRL kit (ICLED105ECB)
6 – M12 Spring washers	12 – Cable locks
6 – M12 x 1.75 nuts	1 – Fog light kit
2 – M10 x 40 x 1.25 bolts	2 – Fog light Surrounds
24 – M10 flat washers	4 – 25mm black plastic blanking plugs
6 – M10 spring washers	1 – 2250mm length 6mm clip lock trim
6 – M10 x 1.25 nuts	4 – 300mm zip ties
8 – M10 x 100 x 1.5 bolts	



East Coast Bullbars (ECB Pty Ltd)

Tel: 07 3897 5700

Fax: 07 3283 1168

ecb@ecb.com.au www.ecb.com.au

29 Snook St
Clontarf QLD 4019
Australia

Po Box 122
Margate QLD 4019
Australia

WORLD'S BEST
ALLOY BULLBARS



Figure 1

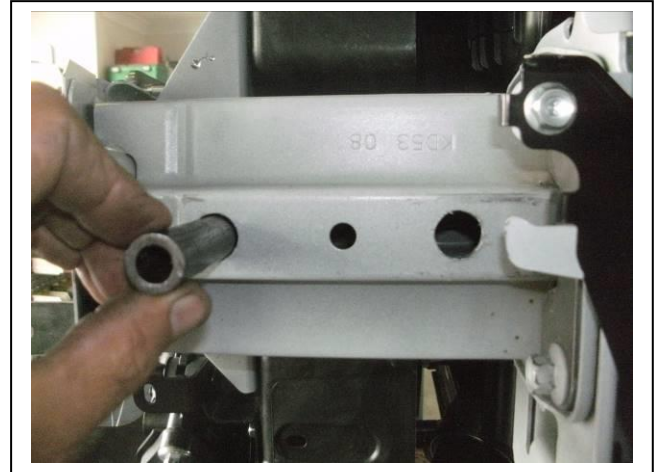


Figure 2

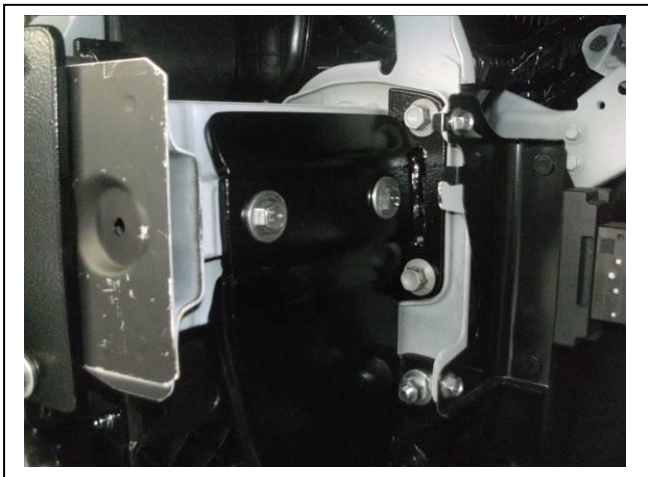


Figure 3

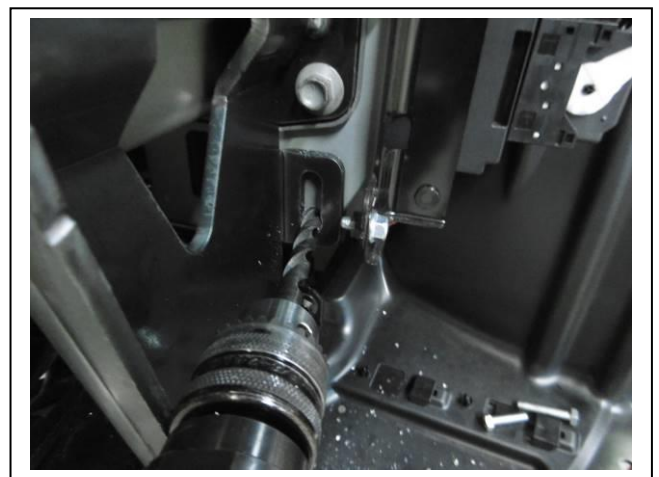


Figure 4



Figure 5

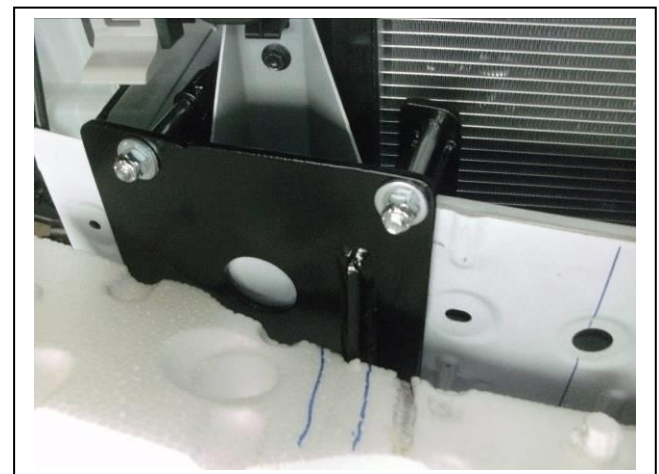


Figure 6



East Coast Bullbars (ECB Pty Ltd)

Tel: 07 3897 5700

Fax: 07 3283 1168

ecb@ecb.com.au www.ecb.com.au

29 Snook St
Clontarf QLD 4019
Australia

Po Box 122
Margate QLD 4019
Australia

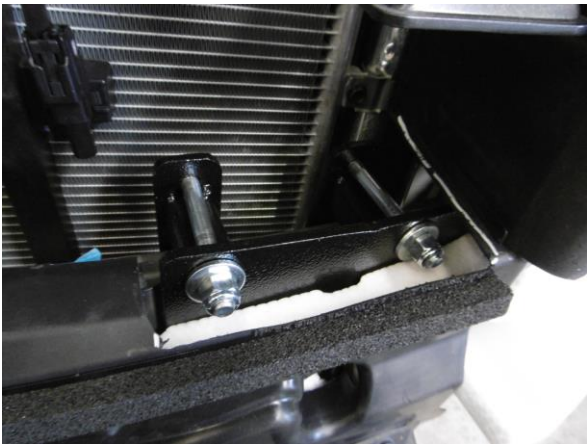


Figure 7



Figure 8



Figure 9

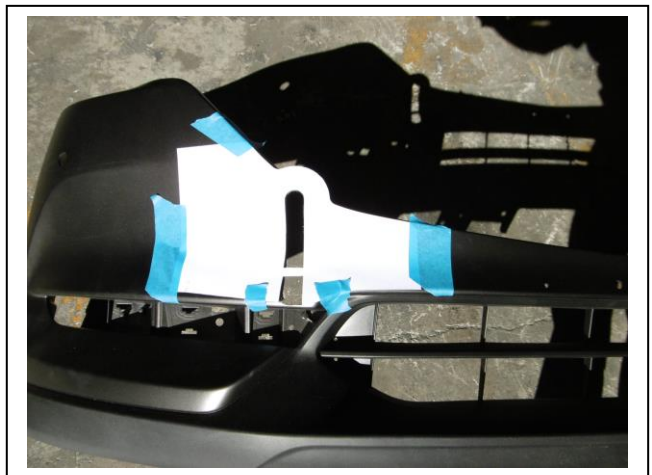


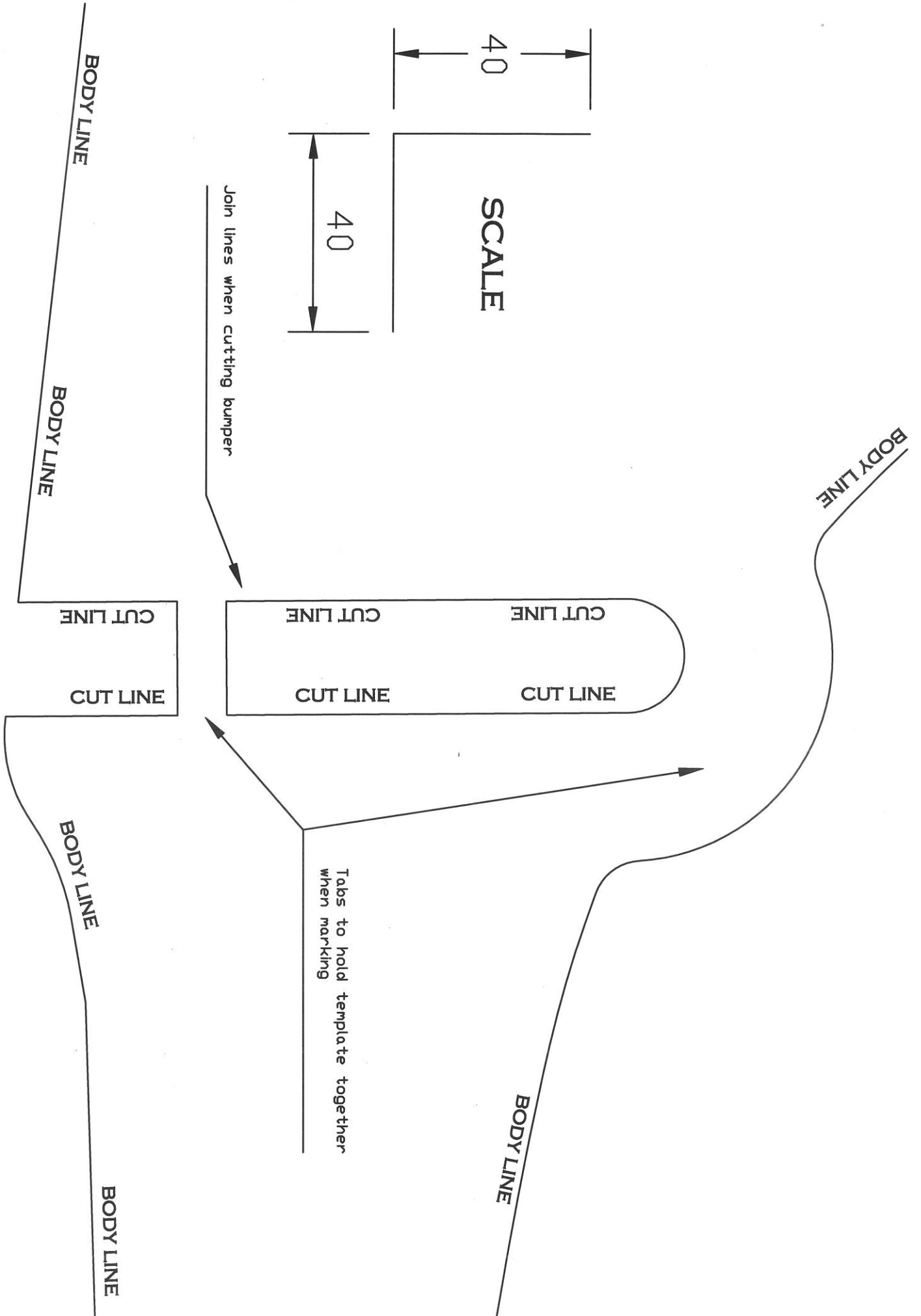
Figure 10



Figure 11



Figure 12





**WORLD'S BEST
ALLOY BULLBARS**

East Coast Bullbars (ECB Pty Ltd)

Tel: 07 3897 5700

Fax: 07 3283 1168

ecb@ecb.com.au www.ecb.com.au

29 Snook St
Clontarf QLD 4019
Australia

Po Box 122
Margate QLD 4019
Australia



**WORLD'S BEST
ALLOY BULLBARS**

East Coast Bullbars (ECB Pty Ltd)

Tel: 07 3897 5700

Fax: 07 3283 1168

ecb@ecb.com.au www.ecb.com.au

29 Snook St
Clontarf QLD 4019
Australia

Po Box 122
Margate QLD 4019
Australia

We value your comments

Dear Fitter,

ECB would like to know how you went with the installation of this product. We value your comment and may need to contact you to clarify some details so please complete your contact details clearly.

We would appreciate if you could complete as many of the following details as possible.

Your Name:	Your contact No.
Product Part No.	Product Invoice No.
Product Description:	Make, model, and year of vehicle:
Product Work Order No.	Company your from/Company product purchased from:

Date of Fitment: ____/____/____

Was the fitting hardware supplied complete? Yes No

If no what was not supplied

Did the installation go well? Yes No

Please provide comments

Please draw diagrams if you need to.

Post to
Reply Paid 122
PO Box 122
Margate QLD 4019

Fax to
(07) 3283 1168



**WORLD'S BEST
ALLOY BULLBARS**

East Coast Bullbars (ECB Pty Ltd)

Tel: 07 3897 5700

Fax: 07 3283 1168

ecb@ecb.com.au www.ecb.com.au

29 Snook St
Clontarf QLD 4019
Australia

Po Box 122
Margate QLD 4019
Australia



WORLD'S BEST
ALLOY BULLBARS

East Coast Bullbars (ECB Pty Ltd)

Tel: 07 3897 5700

Fax: 07 3283 1168

ecb@ecb.com.au www.ecb.com.au

29 Snook St
Clontarf QLD 4019
Australia

Po Box 122
Margate QLD 4019
Australia

DESPATCH CHECKLIST BMA32SY

Work Order #		See other side off this page for photos of all mounts
Finish:		
Transport:		
Due Date:		

- OC.....1 – Pair ECB Front steel mounts
- OC.....1 – Pair ECB tow hooks
- BK.....2 – ECB steel rear inner mounts
- BK.....2 – ECB steel rear outer mounts
- BK.....1 – Bolt Kit
- BK.....1 – ECB Park/Indicator/ **DRL** kit
- BK.....1 – Fog light kit
- BK.....2 – Fog light surrounds
- BK.....1 – 2200mm length 6mm clip lock trim
- OC.....6 – 6mm Air Vents
- OC.....2 – ECB overrides



Is this product “the best it can be” Yes _____ / _____
Wrapper's initials / Checker initials

If **NO** fix before continuing

All parts checked and completed by:

Nut and bolts: _____ Date __/__/__

Order control: _____ Date __/__/__

Final wrap check: _____ Date __/__/__

_____/_____
Wrapper's initials / Checker initials



East Coast Bullbars (ECB Pty Ltd)

Tel: 07 3897 5700

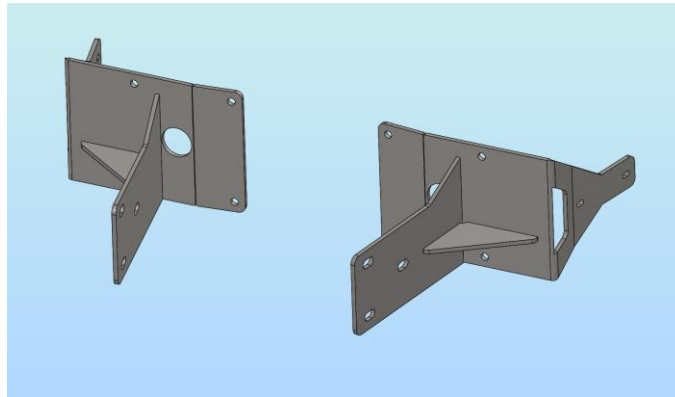
Fax: 07 3283 1168

ecb@ecb.com.au www.ecb.com.au

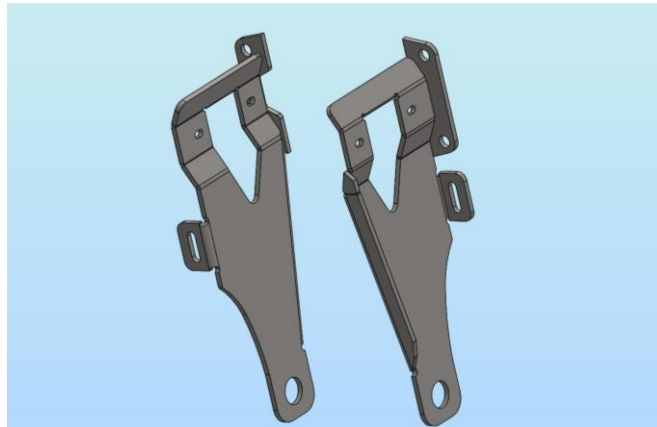
29 Snook St
Clontarf QLD 4019
Australia

Po Box 122
Margate QLD 4019
Australia

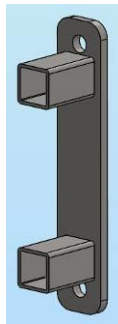
WORLD'S BEST
ALLOY BULLBARS



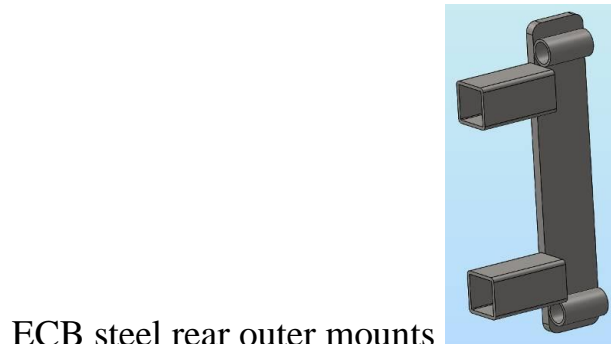
ECB Front steel mounts



ECB tow hooks



ECB steel rear inner mounts



ECB steel rear outer mounts